

Has a memo been submitted through your dean to the Provost for fee approval?

12/17/2014

UA Mail - MSL 215



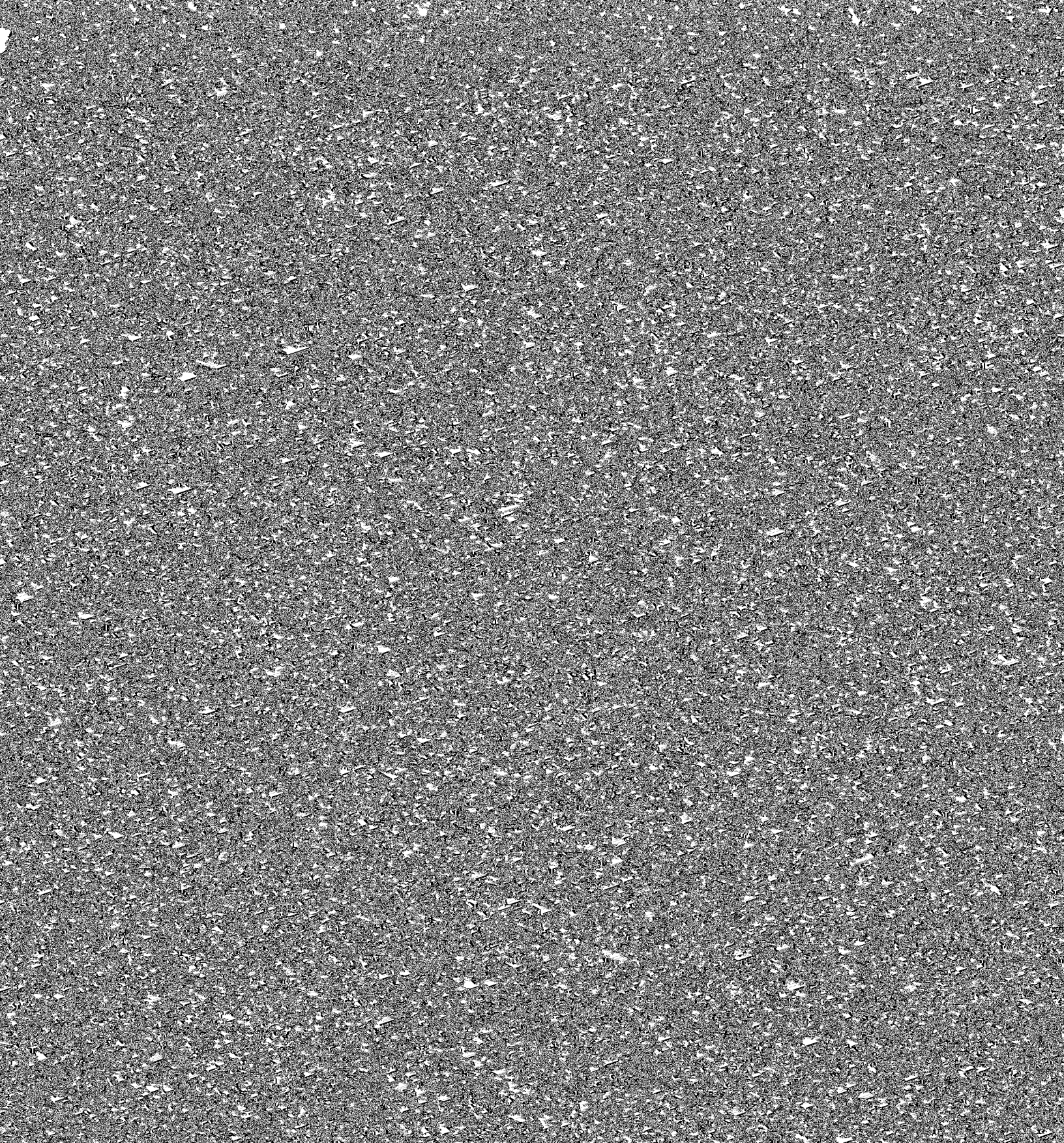
UNIVERSITY
OF ALASKA

Christina Neumann <cneumann@alaska.edu>

MSL 215

Ana Aguilar-Islas <amaquilarislas@alaska.edu>

Wed, Dec 17, 2014 at 12:07 PM



Class Participation:

Attendance, participation in class sessions, discussions, and presentations is required and factors

22-23		Overturning circulation and nutrient cycling	Williams and Follows Ch. 12; Deutsch et al 2007, HW2 due
24-25		Climate Variability and Biological Forcing	Mann and Lazier, Ch. 10

